



C O M P A N Y

ADVIT ENGINEERING COMPANY

Work Address : A-21/02/17,
Kasturba Mahila Udyojak Industrial Premises
Co-Op Khalumbre, Chakan, Maharashtra 410501
Email Id : advitengineeringcompany@gmail.com
GST NO : 27CSMPK3891H1Z7
Mob No : 9096387363

ABOUT US

We do the complete manufacturing of Water Treatment Plants frontal piping, interconnecting piping & vessels internals. We are having 10 years of experienced team in piping spool fabrication. Apart from this we manufacture the pressure vessels, process equipments. We deliver the order within customer's delivery requirements with best quality.

MISSION & VALUES

ADVIT ENGINEERING COMPANY TEAM STRIVES TO GIVE THE MAXIMUM SATISFACTION TO CUSTOMER IN EVERY ASPECT LIKE QUALITY, ON TIME DELIVERY ETC.

VALUES WE LIVE BY

Sincerely caring about our employees and customers is an essential element of the ADVIT Engineering Company culture, and the driving force behind all our actions. Our values are the basis for all our relationships and decisions.

These values guide us, and collectively we:

- Require complete honesty and integrity.*
- Work safe in every endeavor.*
- Make commitments with care and keep our promises.*
- Give individuals responsibility and treat with respect.*
- Value daily achievement & enjoyment with a work/life balance.*
- Conserve the company's resources as if they are our own.*
- Focus on positive outcomes.*
- Are friendly and courteous, fair and compassionate.*
- Encourage each other in our personal and professional endeavors.*

PROCESS PIPING FABRICATION

ADVIT Engineering Company pipe fitters fabricate all types and sizes of pipe in a wide array of commercial, industrial, and institutional applications. We utilize our Pipe and Weld Shops to complete prefabrication for more efficient and cost-effective installation on job sites. Each spool has its own identification; we care for same by punch marking on each pipe spool. So that the segregation on site becomes easier. Our welders having broad experience in fabrication industries. We have the qualified welders according to ASME Section IX. Our proven performance with process piping fabrication has taken us into breweries, food and pharmaceutical plants, and wastewater treatment plants, to name a few.

We are working with CS, SS 304, SS 316, SS 316L, Duplex And Super Duplex Moc's.

CUSTOM PIPE FABRICATION AND WELD SHOP

To complement our fabrication team, ADVIT Engineering Company's extensive custom pipe fabrication and weld facilities provide quality prefabricated materials. Our teams work together, ensuring timely material flow and minimizing on-site work.

Our shop also complete repairs to pipe and tanks for our commercial, industrial, and institutional customers. Our certified welders ensure all piping and welding meet industry and quality standards.

PIPE FABRICATION AND WELDING CAPABILITIES

- *Pipe sizes 1/2" to 30".*
- *Carbon Steel, Stainless Steel, and Specialty Alloy Piping of all Grades & Wall Thicknesses.*
- *Pipe Threading.*
- *Roll Grooving.*
- *Custom Pipe Fabrication.*
- *Certified Welders in Accordance with Requirements of ASME Section IX.*
- *Spools 100% Visually Inspected.*
- *Dye Penetrant, Liquid Penetrant, Magnetic Particle, and Radiographic Examinations.*
- *Hydrostatic and Pneumatic Pressure Testing.*
- *Our Team have been handling the inspection activities with Third party inspection agencies like Bureau Veritas, IRS, SGS, Tata Projects etc.*
- *We have GTAW & FCAW welding machines for welding and all required miscellaneous machines like grinders, pug machine, chapsaw cutting machine. We have the hydro testing facilities.*
- *We hire radiography agencies for Radiographic testing at our shop.*

DRIVING FORCE (MANPOWER)

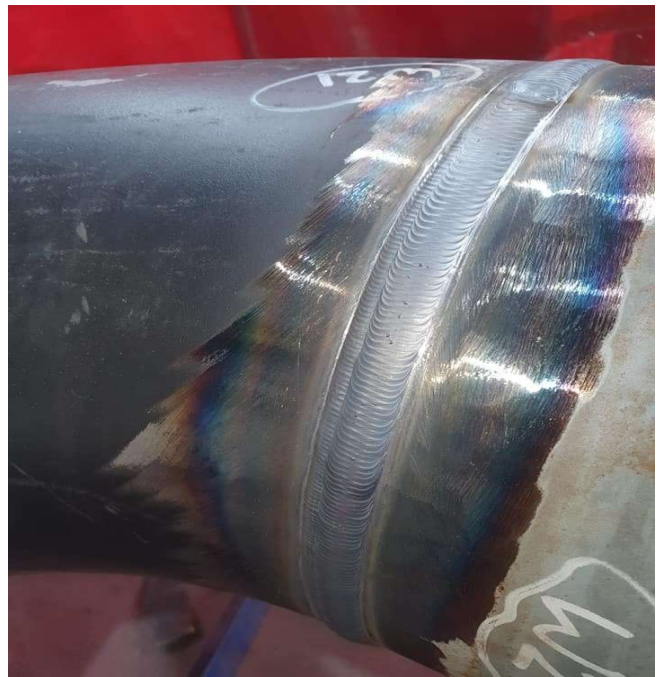
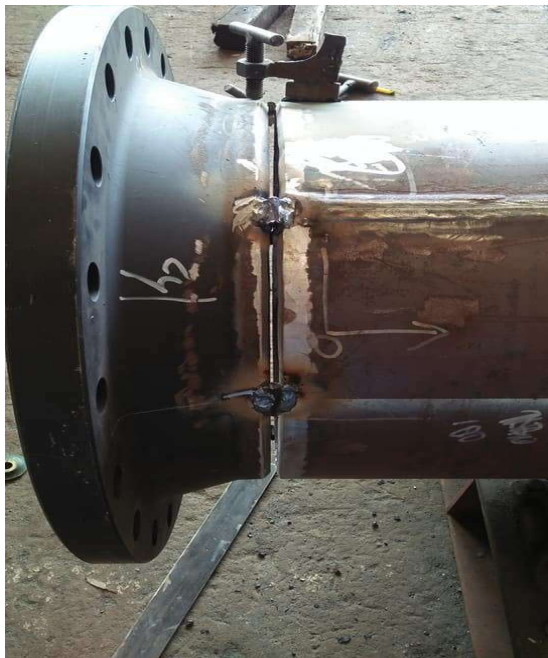
We have the engineers having enough experienced in fabrication industries. They manage the inspection activities & order proposals.

We have two experienced fitters, two qualified welders, two grinder men, one cutting man, and three helpers. We will increase manpower according to load.

SHOP AREA

We have 3500 SQ Ft shop having one bay for storage, one bay for fitting, welding, one bay for hydro testing & one bay for finished goods..

ME SHOP'S PHOTOS



SOME SHOP'S PHOTOS








SOME SHOP'S PHOTOS







OUR CLIENTS

| | |
|--|--|
|  |  AQUA CARE ENGINEERING |
|  |  |
|  | |

GST DETAILS

GSTIN : 27CSMPK3891H1Z7

PAN NO: CSMPK3891H

Mr. GAJANAN S KHANDAGALE

(Director)